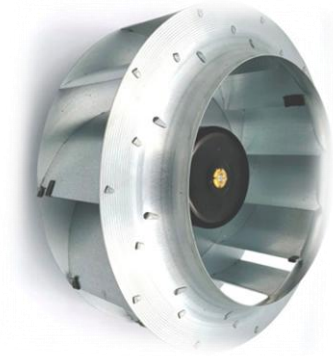


EC Centrifugal fans 離心扇

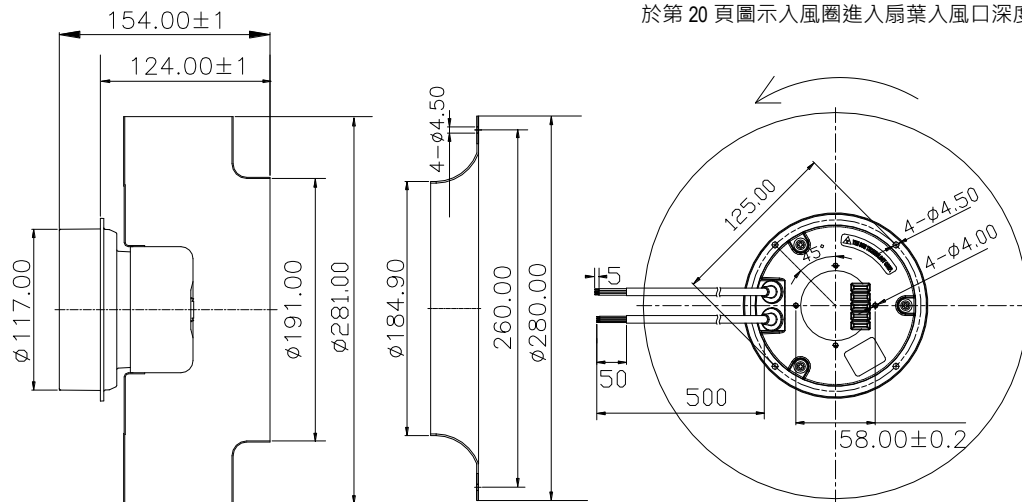
backward curved 後傾式, $\phi 280$



- **Material 材料:**
Impeller 扇葉: Hot-dip galvanized sheet steel (SGCC) 熱浸鍍鋅鋼板
Electronics housing 後蓋: Die-casting aluminum 壓鑄鋁合金
Motor shell 馬達殼: Steel, electro deposited black 電鍍黑鋼材
- **Direction of rotation 轉動方向:** CW view toward rotor 看自入風口為順時針
- **Number of blades 葉片數:** 7
- **Degree of protection 防水防塵等級:** IP65
- **Mode of operating 操作模式:** Continuous operation S1 連續操作 S1
- **Insulation class 絕緣等級:** B
- **Installation position 安裝方向:** Any 任何

Outline dimension 外觀尺寸

The fan air inlet guide entering depth is 2mm and illustrated in page 20
於第 20 頁圖示入風圈進入扇葉入風口深度為 2mm



Technical parameters 規格參數

Model name 機型編碼	QV228080MBL-9A2
Rated voltage 額定電壓(VAC)	230
Frequency 交流電頻率(Hz)	50/60
Current 電流(A)	1.4
Speed 轉速(RPM)	2,100
Power 功耗(W)	160
Max. airflow 最大風量(cfm)	1,322
Max. airflow 最大風量(m ³ /h)	2,248
Max. static pressure 最大靜壓(inAQ)	2.49
Max. static pressure 最大靜壓(Pa)	622
Noise 噪音(dBA)	71.5
Operating temperature 操作溫度(°C)	-25~60
Weight 重量(g)	2,658
Speed control 速控模式	0~10VDC/PWM

Performance curves 性能曲線

